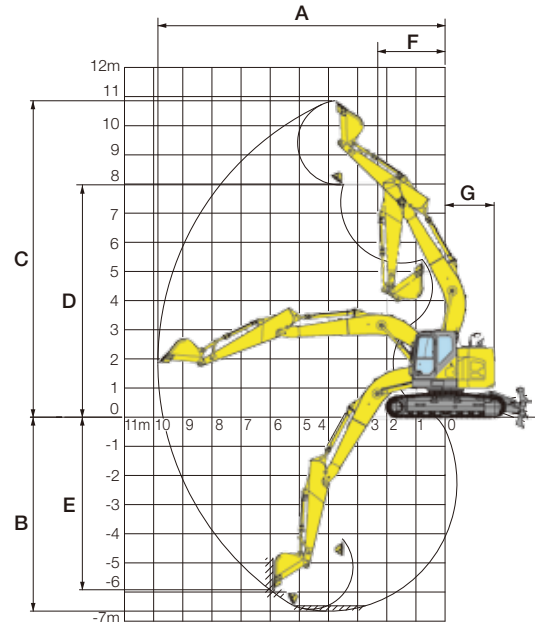


SUMITOMO SH235

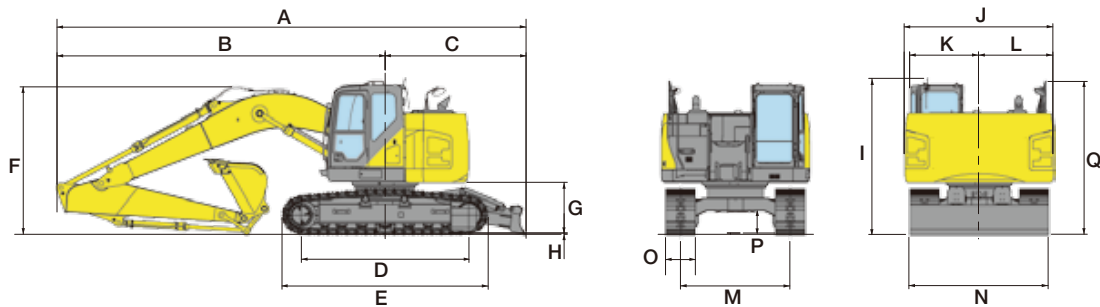
25T-29T STEEL TRACKED EXCAVATOR

Working Range

	SH235X-6	
Arm length	2.40m (SHORT)	2.94m (STD)
Boom length	5.70 m	
A Max digging radius	9,370 mm	9,850 mm
B Max digging depth	6,120 mm	6,650 mm
C Max digging height	10,520 mm	10,860 mm
D Max dumping height	7,630 mm	7,970 mm
E Max vertical wall cut depth	5,480 mm	5,920 mm
F Min front swing radius	2,550 mm	2,310 mm
G Tail swing radius	1,680 mm	



Dimensions



Model	SH235X-6	
Arm length	2.40 m	2.94 m
A Overall length	9,520 mm	9,430 mm
B Length from centre of machine (to arm top)	6,690 mm	6,600 mm
C Upper structure rear end radius	2,830 mm	2,830 mm
D Centre to centre of wheels	3,370 mm	3,370 mm
E Overall track length	4,180 mm	4,180 mm
F Overall height (to top of boom)	3,180 mm	2,960 mm
G Clearance height under upper structure	1,020 mm	1,020 mm
H Shoe lug height	26 mm	26 mm
I Overall height (to top of cab)	3,140 mm	3,140 mm
J Upper structure width	2,990 mm	2,990 mm
K Width from centre of machine (left side)	1,390 mm	1,390 mm
L Width from centre of machine (right side)	1,500 mm	1,500 mm
M Track gauge	2,200 mm	2,200 mm
N Lower structure width	2,800 mm	2,800 mm
O Std. shoe width	600 mm	600 mm
P Minimum ground clearance	440 mm	440 mm
Q Overall height (to top of handrail)	3,090 mm	3,090 mm

YOUR ONE SUPPLIER FOR EQUIPMENT HIRE, NATIONWIDE.

Service area: Nationwide | Branches: New Plymouth & Hawera | Phone: 0800 44 10 44 | Email: hire@presco.co.nz