

KOBELCO SK500

50T-69T STEEL TRACKED EXCAVATOR



Working Ranges

Unit: m

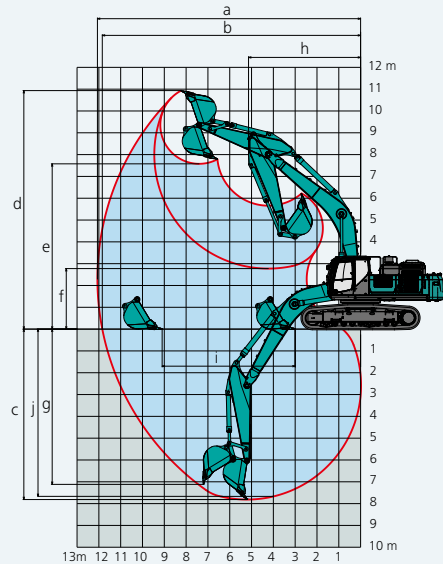
Range	Arm	6.3 m		7.0 m	
		ME 2.4Arm	Short 3.0Arm	Standard 3.45Arm	Long 4.04Arm
a- Max. digging reach		10.88	11.77	12.07	12.61
b- Max. digging reach at ground level		10.63	11.54	11.84	12.4
c- Max. digging depth		6.48	7.36	7.81	8.4
d- Max. digging height		10.92	11.16	10.93	11.14
e- Max. dumping clearance		6.92	7.72	7.58	7.79
f- Min. dumping clearance		3.11	3.22	2.77	2.18
g- Max. vertical wall digging depth		5.58	6.68	7.12	7.5
h- Min. swing radius		4.78	5.28	5.14	5.21
i- Horizontal digging stroke at ground level		3.59	5.21	6.1	7.07
j- Digging depth for 2.4 m (8') flat bottom		6.31	7.21	7.67	8.27
Bucket capacity ISO heaped m ³		3.4	2.1	1.9	1.6

Digging Force (ISO 6015)

Unit: kN

Arm length	ME 2.4Arm	Short 3.0Arm	Standard 3.45Arm	Long 4.04Arm
Bucket digging force	288/312*	266/291*	267/292*	289/264*
Arm crowding force	247/270*	223/244*	203/222*	198/181*

*Power Boost engaged.



— 3.45 m Standard Arm

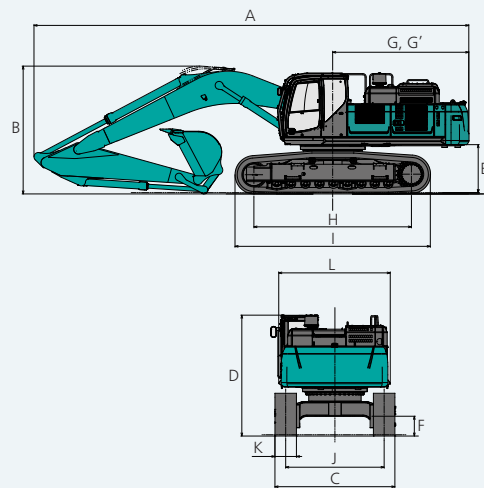


Dimensions

Unit: mm

Arm length	ME 2.4Arm	Short 3.0Arm	Standard 3.45Arm	Long 4.04Arm
A Overall length	11,910	12,200	12,140	12,190
B Overall height (to top of boom)	4,240	3,770	3,570	3,720
C Overall width			3,350	
D Overall height (to top of cab)			3,380	
E Ground clearance of rear end*			1,260*	
F Ground clearance*			510*	
G Tail swing radius	3,880		3,800	
G' Distance from center of swing to rear end	3,880		3,800	
H Tumbler distance			4,400	
I Overall length of crawler			5,450	
J Track gauge			2,750	
K Shoe width			600	
L Overall width of upperstructure			3,110	

*Excluding height of shoe lug.



Operating Weight & Ground Pressure

In standard trim, with standard boom, 3.45 m arm, and 1.9 m³ ISO heaped bucket

Shaped		Triple grouser shoes (even height)	
Shoe width	mm	600	800
Overall width of crawler	mm	3,350	3,550
Ground pressure	kPa	86	66
Operating weight	kg	50,200	51,600

In standard trim, with 6.3 m ME boom, 2.4 m ME arm, and 3.4 m³ ISO heaped bucket

Shaped		Triple grouser shoes (even height)	
Shoe width	mm	600	800
Overall width of crawler	mm	3,350	3,550
Ground pressure	kPa	89	68
Operating weight	kg	51,600	53,000

YOUR ONE SUPPLIER FOR EQUIPMENT HIRE, NATIONWIDE.

Service area: Nationwide | Branches: New Plymouth & Hawera | Phone: 0800 44 10 44 | Email: hire@presco.co.nz