

KOBELCO SK250

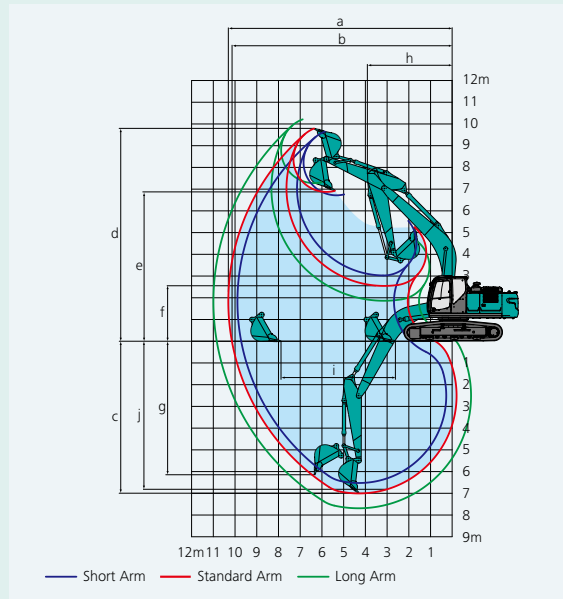
25T-29T STEEL TRACKED EXCAVATOR



Working Ranges

Unit: m

Range	Arm	6.02 m		
		Short 2.5 m	Standard 2.98 m	Long 3.66 m
a- Max. digging reach		9.89	10.31	10.98
b- Max. digging reach at ground level		9.72	10.14	10.82
c- Max. digging depth		6.52	7.0	7.68
d- Max. digging height		9.65	9.79	10.22
e- Max. dumping clearance		6.72	6.88	7.28
f- Min. dumping clearance		3.03	2.55	1.87
g- Max. vertical wall digging depth		5.82	6.15	6.97
h- Min. swing radius		3.91	3.91	3.92
i- Horizontal digging stroke at ground level		4.2	5.26	6.48
j- Digging depth for 2.4 m (8') flat bottom		6.32	6.82	7.54
Bucket capacity ISO heaped m ³		1.2	1.0	0.81



Digging Force (ISO 6015)

Unit: kN (tf)

Arm length	Short 2.5 m	Standard 2.98 m	Long 3.66 m
Bucket digging force	170 (17.3) 187 (19.1)*	170 (17.3) 187 (19.1)*	170 (17.3) 187 (19.1)*
Arm crowding force	142 (14.5) 156 (15.9)*	119 (12.1) 131 (13.4)*	104 (10.6)

*Power Boost engaged.



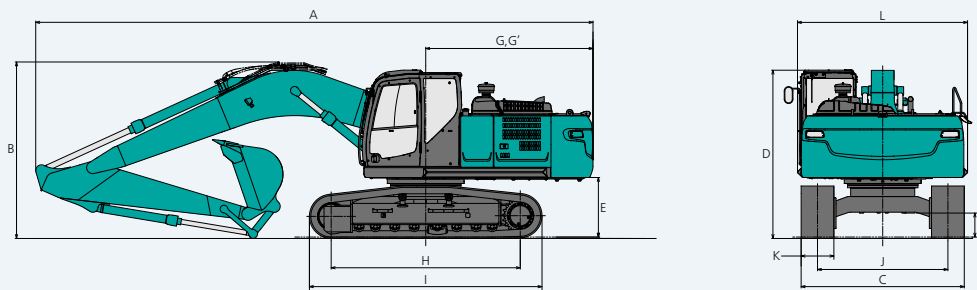
Dimensions

Unit: mm

Arm length	Short 2.5 m	Standard 2.98 m	Long 3.66 m
A Overall length	10,270	10,210	10,230
B Overall height (to top of boom)	3,350	3,230	3,300
C Overall width of crawler	SK250	2,990	
	SK260LC	3,190	
D Overall height (to top of cab)	3,090		
E Ground clearance of rear end*	1,090		
F Ground clearance*	440		
G Tail swing radius	3,100		

G' Distance from center of swing to rear end	SK250	3,070
	SK260LC	3,470
H Tumbler distance	SK250	3,850
	SK260LC	4,260
I Overall length of crawler	SK250	4,640
	SK260LC	2,390
J Track gauge	SK250	2,590
	SK260LC	600
K Shoe width	3,120	
L Overall width of upperstructure	*Without including height of shoe	

*Without including height of shoe



Operating Weight & Ground Pressure

In standard trim, with standard boom, 2.98 m arm, and 1.0 m³ ISO heaped bucket

Shaped		Triple grouser shoes (even height)		
Shoe width	mm	600	700	800
Overall width of crawler	SK250 mm	2,990	3,090	3,190
	SK260LC mm	3,190	3,290	3,390
Ground pressure	SK250 kPa	55	48	43
	SK260LC kPa	52	44	40
Operating weight	SK250 kg	25,400	25,700	26,000
	SK260LC kg	26,000	26,300	26,600

YOUR ONE SUPPLIER FOR EQUIPMENT HIRE, NATIONWIDE.

Service area: Nationwide | Branches: New Plymouth & Hawera | Phone: 0800 44 10 44 | Email: hire@presco.co.nz