

# KOBELCO SK200

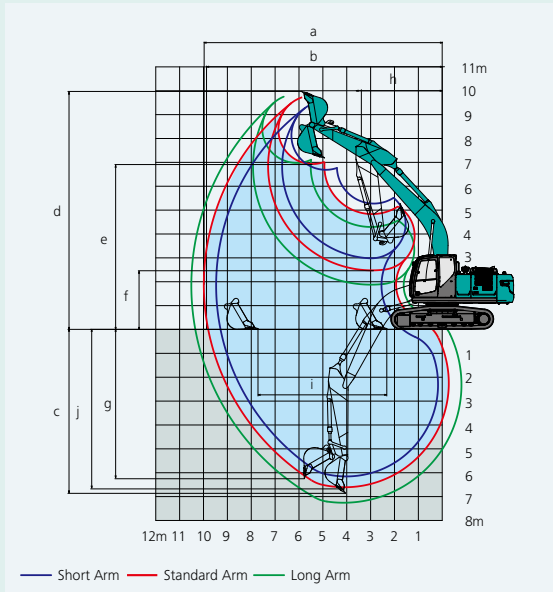
20T-24T STEEL TRACKED EXCAVATOR



## Working Ranges

Unit: m

Range	Arm	5.65 m Boom		
		Short 2.4 m	Standard 2.94 m	Long 3.5 m
a- Max. digging reach		9.42	9.9	10.34
b- Max. digging reach at ground level		9.24	9.73	10.17
c- Max. digging depth		6.16	6.7	7.26
d- Max. digging height		9.51	9.72	9.75
e- Max. dumping clearance		6.68	6.91	6.97
f- Min. dumping clearance		2.98	2.43	1.87
g- Max. vertical wall digging depth		5.57	6.1	6.47
h- Min. swing radius		3.56	3.55	3.48
i- Horizontal digging stroke at ground level		4.08	5.27	6.08
j- Digging depth for 2.4 m (8') flat bottom		5.95	6.52	7.08
Bucket capacity ISO heaped m <sup>3</sup>		0.93	0.8	0.7



## Digging Force (ISO 6015)

Unit: kN

Arm length	Short 2.4 m	Standard 2.94 m	Long 3.5 m
Bucket digging force	143 157*	143 157*	143 157*
Arm crowding force	121 133*	102 112*	91.8 101*

\*Power Boost engaged.



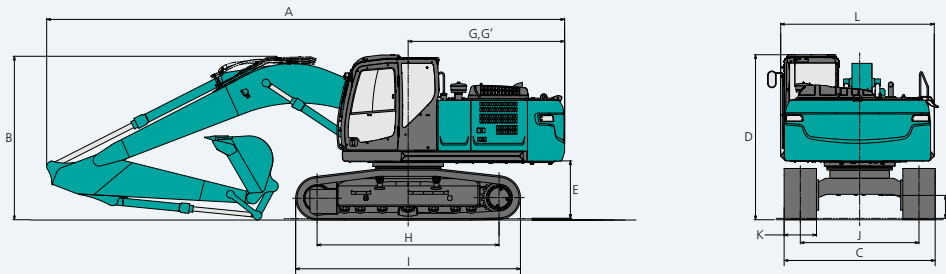
## Dimensions

Unit: mm

Arm length	Short 2.4 m	Standard 2.94 m	Long 3.5 m
A Overall length	9,680	9,600	9,670
B Overall height (to top of boom)	3,190	3,030	3,180
C Overall width of crawler	SK200	2,800	
	SK210LC	2,990	
D Overall height (to top of cab)	3,060		
E Ground clearance of rear end*	1,060		
F Ground clearance*	430		
G Tail swing radius	2,910		

G' Distance from center of swing to rear end		2,900
H Tumbler distance	SK200	3,370
	SK210LC	3,660
I Overall length of crawler	SK200	4,170
	SK210LC	4,450
J Track gauge	SK200	2,200
	SK210LC	2,390
K Shoe width		600
L Overall width of upperstructure		2,850

\*Without including height of shoe



## Operating Weight & Ground Pressure

In standard trim, with standard boom, 2.94 m arm, and 0.8 m<sup>3</sup> ISO heaped bucket

Shaped		mm	Triple grouser shoes (even height)		
			600	700	800
Overall width of crawler	SK200	mm	2,800	2,900	2,990
	SK210LC	mm	2,990	3,090	3,180
Ground pressure	SK200	kPa	47	41	36
	SK210LC	kPa	45	39	35
Operating weight	SK200	kg	21,000	21,400	21,700
	SK210LC	kg	21,400	21,800	22,100

**YOUR ONE SUPPLIER FOR EQUIPMENT HIRE, NATIONWIDE.**

Service area: Nationwide | Branches: New Plymouth & Hawera | Phone: 0800 44 10 44 | Email: hire@presco.co.nz