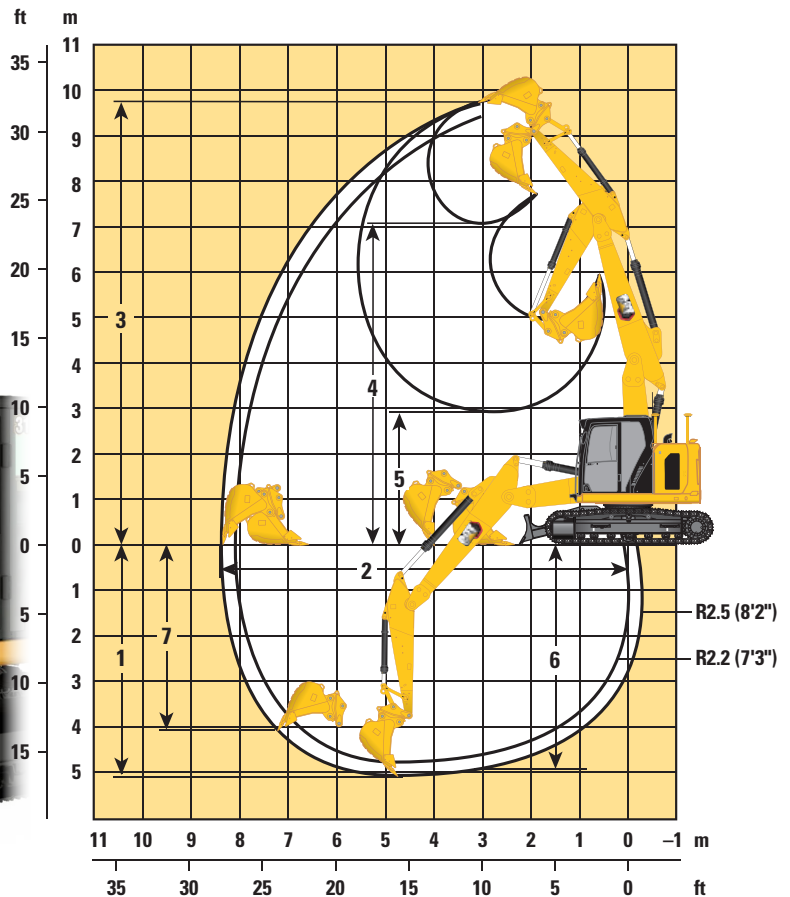


CAT 315

15T-19T STEEL TRACKED EXCAVATOR



Boom Options

**Variable Angle Boom
2.4 m/2.44 m (7'8"/8'0")**

Stick Options

Reach Stick

	Variable Angle Boom 2.4 m/2.44 m (7'8"/8'0")					
	R2.2 (7'3")		R2.5 (8'2")		R3.0 (9'10")	
1 Maximum Digging Depth	4720 mm	15'6"	5020 mm	16'6"	5510 mm	18'1"
2 Maximum Reach at Ground Line	8090 mm	26'7"	8380 mm	27'6"	8850 mm	29'0"
3 Maximum Cutting Height	9440 mm	31'0"	9700 mm	31'10"	10 120 mm	33'2"
4 Maximum Loading Height	6960 mm	22'10"	7220 mm	23'8"	7640 mm	25'1"
5 Minimum Loading Height	3120 mm	10'3"	2870 mm	9'5"	2470 mm	8'1"
6 Maximum Depth Cut for 2440 mm (8'0") Level Bottom	4590 mm	15'1"	4890 mm	16'1"	5390 mm	17'8"
7 Maximum Vertical Wall Digging Depth	3760 mm	12'4"	4090 mm	13'5"	4550 mm	14'11"
Minimum Working Equipment Radius	1820 mm	6'0"	1980 mm	6'6"	2300 mm	7'7"
Bucket Digging Force (ISO)	98.47 kN	22,140 lbf	98.45 kN	22,130 lbf	98.67 kN	22,180 lbf
Stick Digging Force (ISO)	72.85 kN	16,380 lbf	66.75 kN	15,010 lbf	59.29 kN	16,380 lbf
Bucket Type	GD		GD		GD	
Bucket Capacity	0.68 m ³	0.89 yd ³	0.68 m ³	0.89 yd ³	0.68 m ³	0.89 yd ³
Bucket Tip Radius	1240 mm	4'1"	1240 mm	4'1"	1240 mm	4'1"

YOUR ONE SUPPLIER FOR EQUIPMENT HIRE, NATIONWIDE.

Service area: Nationwide | **Branches:** New Plymouth & Hawera | **Phone:** 0800 44 10 44 | **Email:** hire@presco.co.nz