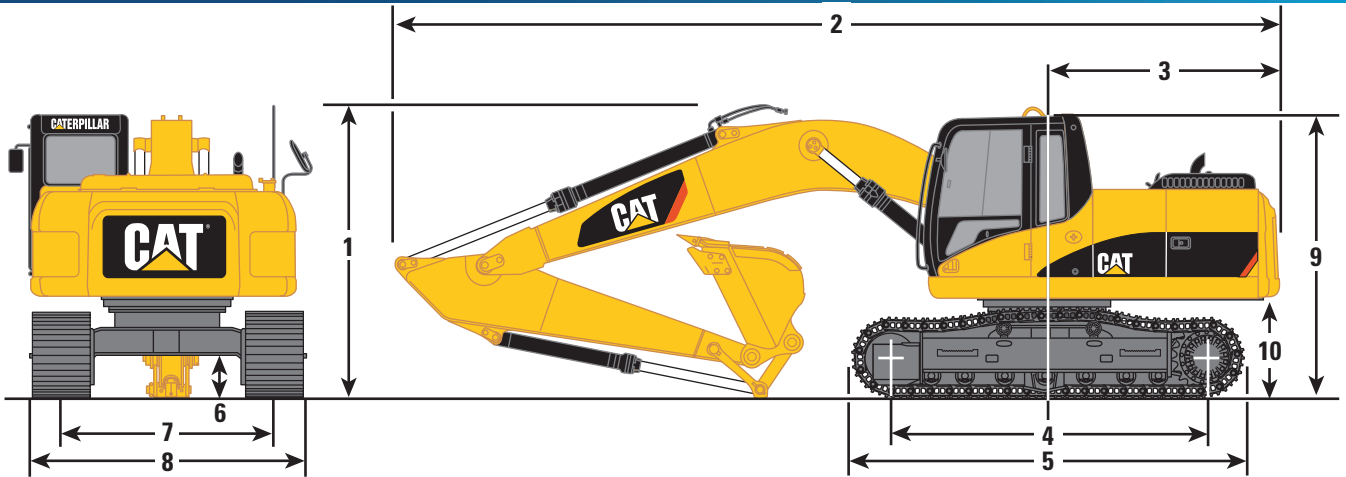
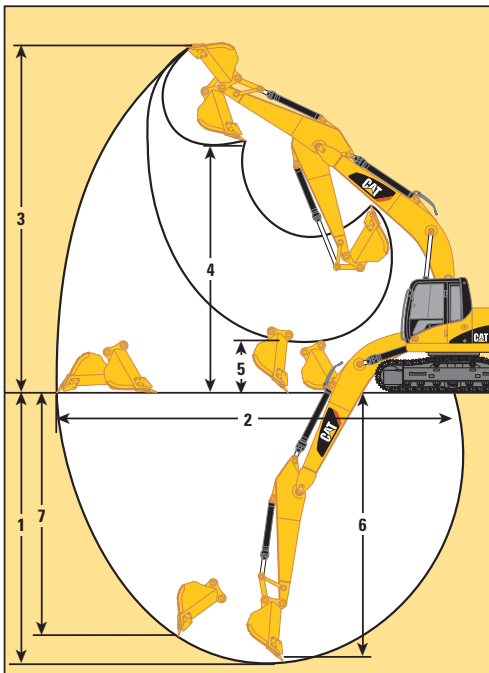


CAT 312

10T-14T STEEL TRACKED EXCAVATOR



Boom Options	Reach	Reach	Reach
Stick Options	2.5 m (8'2")	2.8 m (9'2")	3.0 m (9'10")
1 Shipping Height	2830 mm (9'3")	2970 mm (9'9")	2830 mm (9'3")
2 Shipping Length	7610 mm (25'0")	7590 mm (24'11")	7610 mm (25'0")
3 Tail Swing Radius	2140 mm (7'0")	2140 mm (7'0")	2140 mm (7'0")
4 Length to Center of Rollers			
312D	2780 mm (9'1")	2780 mm (9'1")	2780 mm (9'1")
312D L	3040 mm (10'0")	3040 mm (10'0")	3040 mm (10'0")
5 Track Length			
312D	3490 mm (11'5")	3490 mm (11'5")	3490 mm (11'5")
312D L	3750 mm (12'4")	3750 mm (12'4")	3750 mm (12'4")
6 Ground Clearance	430 mm (1'5")	430 mm (1'5")	430 mm (1'5")
7 Track Gauge			
312D	1990 mm (6'6")	1990 mm (6'6")	1990 mm (6'6")
312D L	1990 mm (6'6")	1990 mm (6'6")	1990 mm (6'6")
8 Transport Width	500 mm (20") Shoes	600 mm (24") Shoes	700 mm (28") Shoes
312D	2490 mm (8'2")	2590 mm (8'6")	2690 mm (8'10")
312D L	2490 mm (8'2")	2590 mm (8'6")	2690 mm (8'10")
9 Cab Height	2760 mm (9'1")	2760 mm (9'1")	2760 mm (9'1")
10 Counterweight Clearance	915 mm (3'0")	915 mm (3'0")	915 mm (3'0")



Boom	Reach		
	5.68 m (18'7")	5.68 m (18'7")	5.68 m (18'7")
Stick	2.5 m (8'2")*	2.8 m (9'2")*	3.0 m (9'10")*
Bucket	0.52 m ³ (0.68 yd ³)	0.52 m ³ (0.68 yd ³)	0.52 m ³ (0.68 yd ³)
1 Maximum Digging Depth	5540 mm (18'2")	5840 mm (19'2")	6040 mm (19'10")
2 Maximum Reach at Ground Level	8170 mm (26'10")	8430 mm (27'8")	8620 mm (28'3")
3 Maximum Cutting Height	8480 mm (27'10")	8580 mm (28'2")	8700 mm (28'7")
4 Maximum Loading Height	6100 mm (20'0")	6210 mm (20'4")	6340 mm (20'10")
5 Minimum Loading Height	2020 mm (6'8")	1730 mm (5'8")	1530 mm (5'0")
6 Maximum Depth Cut for 2440 mm (8'0") Level Bottom	5330 mm (17'6")	5640 mm (18'6")	5850 mm (19'2")
7 Maximum Vertical Wall Digging Depth	4980 mm (16'4")	5160 mm (16'11")	5360 mm (17'7")
Stick Digging Force (SAE)	66 kN (14,736 lbf)	62 kN (13,855 lbf)	59 kN (13,169 lbf)
Bucket Digging Force (SAE)	96 kN (21,586 lbf)	96 kN (21,589 lbf)	96 kN (21,634 lbf)

* Measurements shown are for machines equipped with the 0.52 m³ (0.68 yd³) buckets.

YOUR ONE SUPPLIER FOR EQUIPMENT HIRE, NATIONWIDE.

Service area: Nationwide | Branches: New Plymouth & Hawera | Phone: 0800 44 10 44 | Email: hire@presco.co.nz